



DESIGN PORTRAIT.





B&B
ITALIA



01

04 - 05

Mariana Muñoz

Cheers to our 10-year anniversary, and the timeless interiors we've poured our souls into creating.



02

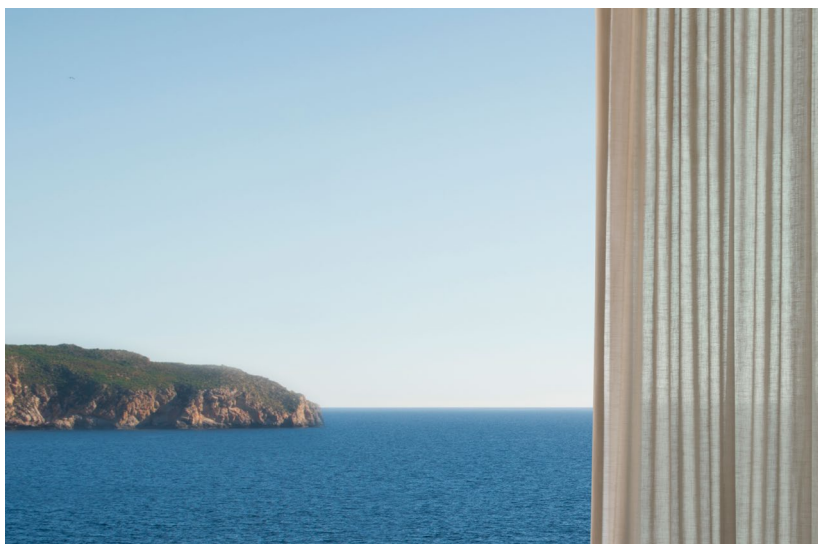
06 - 09

A decade of redefining Mediterranean interiors

It's been 10 years of Terraza Balear redefining interior design, creating a unique signature that's internationally recognizable and aspirational to many.

Contents

MAGAZINE 04 / 2020 EDITION



Concept

Melding the contemporary sophistication of “Made in Italy” with the Mediterranean lifestyle to create a look of distinctive elegance.



Interior design projects

Take a deep breath and embark on an inspiring journey through a selection of our top design projects: Villa Statera, Canyamel, Santanyí, M14, NF1, M16, SV and Seahouse.



Mariana Muñoz

CHEERS TO OUR 10-YEAR ANNIVERSARY, AND THE TIMELESS INTERIORS WE'VE POURED OUR SOULS INTO CREATING.

If in 2010, when I first opened the doors of our showroom, someone would've told me that what started as a small project full of enthusiasm and passion would develop into a unique and recognizable stamp that has redefined Mediterranean interior design, I wouldn't have been able to even dream it.

When I started Terraza Balear 10 years ago, my vision was to craft sacred spaces, inspired by the beauty of Mallorca and the utmost importance of harmonic surroundings. And to my truest splendor, what started as a company with two employees now employs more than 40 professionals, including interior designers, architects and decorators, and is now one of the top high-end design studios offering integrated residential and commercial design services for some of the most breathtaking estates — and even yachts — in Spain and beyond.

Welcome to the fourth edition of Terraza Balear magazine, where we'll share within these pages a glimpse into our DNA, and the passion, creativity and elegance that has propelled our incredible and transformational growth over the past decade.

Before we continue, I would like to thank everyone who has been involved in this process. None of our success over the last 10 years would be possible without my loving and supportive family, our devoted, impassioned and talented team, our wonderful suppliers — who represent the most prestigious home furnishings brands available — and all of our wonderful clients.

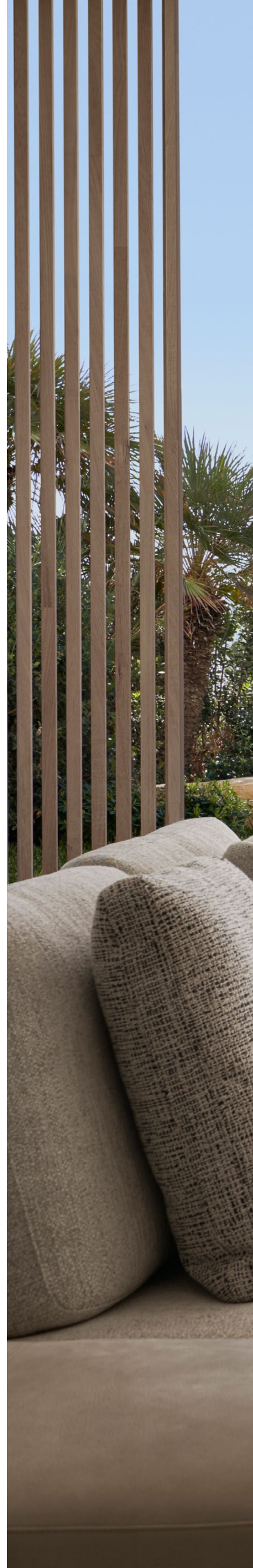
Settle in and get inspired by our latest projects, our unique, nature-inspired design style and the outright devotion we have to our craft.



MARIANA MUÑOZ, CEO

A Decade of Redefining Mediterranean Interiors

THESE 10 YEARS HAVE BEEN FULL OF PASSION,
ENTHUSIASM AND CREATIVITY FOR INFUSING
MEDITERRANEAN SOUL INTO EVERY SPACE WE
DESIGN.







10
years

It's been 10 years of Terraza Balear redefining interior design, creating a unique signature that's internationally recognizable and aspirational to many. From just a showroom to a fully integrated studio with design services, embark on a look back at our journey with us.

2010

TERRAZA BALEAR OPENED WITH DEDON AS ITS SINGLE BRAND.

2011

OUTDOOR BRANDS WERE BROUGHT INTO THE SHOWROOM.

2012

ADDITIONAL INDOOR BRANDS WERE BROUGHT INTO THE SHOWROOM.

2013

INTERIOR ARCHITECTURE SERVICES ARE NOW AVAILABLE TO CLIENTS.

2014

OFFICE AND STUDIO REFORM.

2015

JOAN BENNÀSSAR'S ART GALLERY IS INTEGRATED INTO THE SHOWROOM.

2016

THE SHOWROOM IS EXPANDED TO 1,000 M2

2017

TERRAZA BALEAR BECOMES THE EXCLUSIVE MINOTTI DEALER IN THE BALEARIC ISLANDS.

2018

TERRAZA BALEAR STARTS TO INTEGRATE KITCHENS INTO ITS DESIGN SERVICES.

2019

COMPREHENSIVE PROJECTS – INCLUDING INTERIOR ARCHITECTURE, INTERIOR DESIGN, KITCHEN DESIGN, WARDROBES, BATHROOMS, FURNITURE, ART AND STYLING SERVICES.

2020

THE FIRM COMPLETES SEVERAL LARGE NAUTICAL PROJECTS.

Concept

MELDING THE CONTEMPORARY SOPHISTICATION OF
"MADE IN ITALY" WITH THE MEDITERRANEAN LIFESTYLE
TO CREATE A LOOK OF DISTINCTIVE ELEGANCE.



In our 10 years designing, Terraza Balear has been evolving and defining a new way of understanding interior design in the Balearic Islands and beyond, achieving international recognition for the quality of our projects. Our comprehensive and integral solutions are what set us apart — we give shape to spaces, reinvigorating them and reimagining their potential for the clients who will experience them.

During this time, we've fostered our own recognizable stamp, combining the elegance of our "Made in Italy" brands with German precision and the essence of our Spanish soul. Our work transforms residences into magical living spaces that speak one language throughout. We strive to bring the beauty and tranquillity of the Mediterranean environment indoors, helping homeowners to feel at ease with all that nature has to offer.

Designing a home is a wonderful, creative process. We start by working on the concept: Shaping the ideas and needs of the client, designing a space that reflects their own tastes and personality.

A combination of rich neutral tones, natural textures and sophisticated silhouettes are the cornerstones of our design philosophy, allowing us to meld the interior with the home's exterior and breathtaking environment.

Once the concept is defined, we start with the hardware, creating structural spaces like the kitchen, bathrooms, cabinets, and systems. Then we dive into the software, including furniture, carpets, decorative lamps, curtains, artwork and décor items.

Finally, we turn to the selection of fresh and natural materials, relying on the colour palette that nature offers us. And throughout the process, we focus on the details — details are the key! The final product will be one that is truly as individualized as you.



Interior design projects

WE ARE MUCH MORE THAN A SHOWROOM AND INTERIOR DESIGN STUDIO; WE ARE A WAY OF LIFE.

We aim to create spaces that embrace you, in harmony. Spaces where you and everyone important to you feel at peace, with everything you need at your fingertips. Spaces integrated into the environment, in continuous contact with the nature that surrounds it. In short, spaces that are the best possible for you and your loved ones.

Since it opened its doors in 2010, Terraza Balear has become a benchmark of interior design both nationally and internationally.

Within the first few years, we began to combine luxury interior design projects with a 1,000m² showroom designed as an inspirational journey through the world of Terraza Balear, where visitors can experience our typical look and feel including spaces for all areas of a home.

We also offer comprehensive interior design projects at a distance. This enables us to work globally, collaborating with our customers beyond Mallorca, in their country of origin or in homes located anywhere in the world while still guaranteeing the highest quality and offering a totally personalized service.

Our portfolio continues to grow, including the highest-quality projects not only in our hometown of the Balearic Islands, but internationally in places like Spain, Switzerland, Sweden, Germany, England, Scotland and many more.

From city penthouses to the most exclusive oceanside estates, our commitment remains the same — for each client to feel completely at ease at home.

You are holding a piece of our hearts in your hands. Please take a deep breath, relax and embark on an inspiring journey through our design projects.







Elio chairs by Yabu Pushelberg – Illum teak table by Merckx & Maes



Living the good life outside.
Love it, live it, share it.

www.tribu.com

TRIBU
The art of leisure

Villa Statera

BRING THE SPLENDORS AND TRANQUILLITY OF
THE GLORIOUS MEDITERRANEAN LANDSCAPE
INTO YOUR HOME.

Views, views and more views. On a generous 1,037 m² plot, you find this stunning 398 m² villa with several terraces that offers wonderful vistas from pretty much every spot. This, combined with a carefully curated, stunning interior design scheme, guarantees the best of what Mediterranean life is about.

The villa was designed by Archirevolution, who constructed the perfect canvas for Terraza Balear to create a luxurious and inviting home. Our designers worked hand-in-hand with the architect to develop all interior architecture and the furnishings concept. To emphasize the design's clever connection of indoor and outdoor, a palette of tones and materials found in the many views outside, was introduced inside.







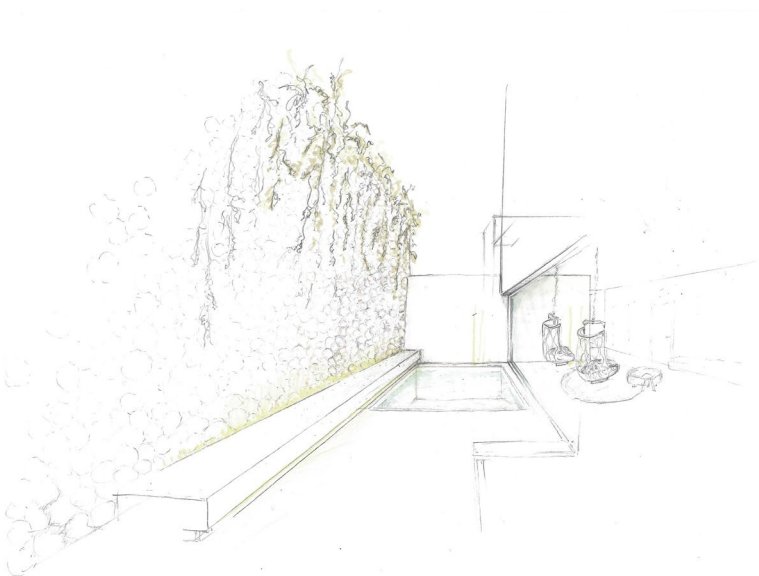
In the top-floor living room, with its impressive floor-to-ceiling corner windows, turquoise accents in both the rug and two Flexform Feelgood club chairs mimic the famous hue of the sea below. A large sectional Flexform sofa in a subtle grey echoes the earthy tones and is the perfect spot to relax with family or friends. Accessories in amber tones or with a splash of colour tie it all together and provide an overall sense of comfort and serenity.





The open-plan Poliform kitchen allows home chefs to stay in touch with friends and family while doing their magic. Those who want to take a closer look can get comfortable on one of the bar stools along the generous kitchen island. Once dinner is ready, it can be enjoyed in the dining area open to both the kitchen and living space, with a large TIX table by Mobimex and comfortable Minotti Flavin dining chairs.





Downstairs, a large entrance provides a relaxing space and gives access to the bedrooms. The master bedroom offers a gorgeous en-suite bathroom and a substantial walk-in closet. Stone clad walls and the use of unimposing greys and whites with hints of copper make sure this room is a tranquil retreat to relax or for good night's sleep.







On the same floor, three additional bedrooms, each comparable in size and with their own en-suites, offer plenty of room for family members or guests.

All bedrooms enjoy access to a spacious balcony. At the back, facing the Tramontana mountain range, a patio lets in extra natural light and provides a focal point upon entering the home.



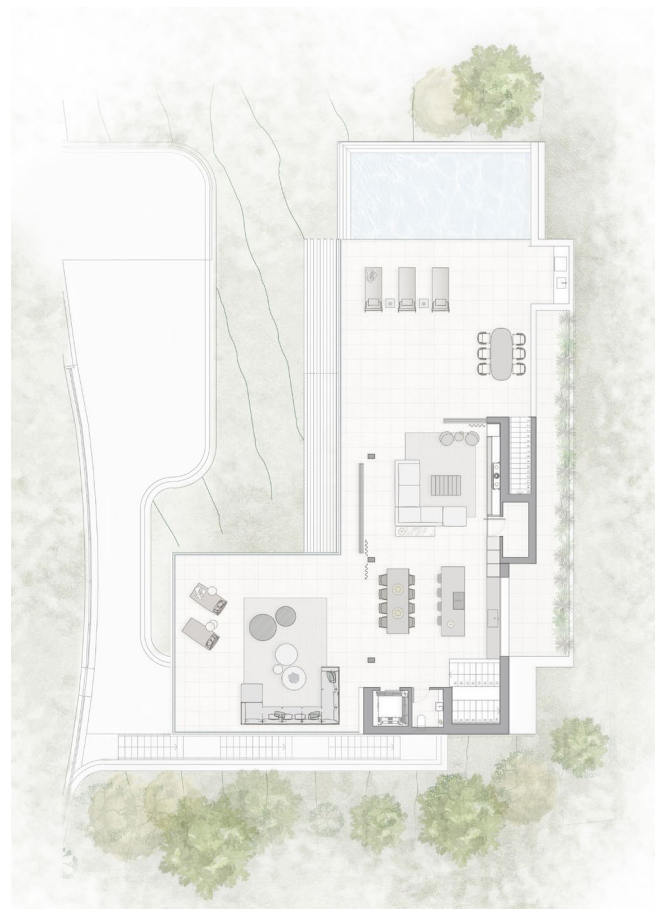




Outdoor, the embrace of nature and luxury continues. Glass panelling along the various terraces and decks allow for uninterrupted views of the Mediterranean Sea.

The infinity pool on the top floor terrace is the embodiment of a luxurious lifestyle. Along with it, Tribù Forum lounge chairs beckon to let the sun do its magic after a swim. Poolside cocktails can be served on the Gervasoni side tables. A Tosca table with matching chairs by Tribù allows for al fresco dining or breakfast in the morning sun.





This villa is the blueprint for Mediterranean living at its best. Inside, an elegant, yet understated interior design plan blends in seamlessly with the natural beauty outside, without imposing or competing with Archirevolution's intrinsic design and the aesthetics of the home. We want to thank them, and Promoter E5 Living, for a wonderful partnership and their trust in our vision.

FLEXFORM

MADE IN ITALY

OUTDOOR COLLECTION
VULCANO SECTIONAL SOFA
Antonio Citterio Design

www.flexform.it

Canyamel

NEUTRAL, TEXTURAL AND SOFT FINISHES
PROVIDE THE CALMING AMBIANCE WITH
A LUXURIOUS EDGE THAT TERRAZA BALEAR
IS KNOWN FOR.

In collaboration with Esteva i Esteva Arquitectos and Vivenda Building Co, the goal of this project was to respect the architectural concept of the home while uniting it with the views just out the windows.







Starting in the living room, a spacious layout is created using sophisticated, Made-in-Italy silhouettes. Breathtaking solid wood center tables accent the custom sofa, which was specially made by Minott in a 120-degree angle to shadow the wall and fit perfectly in the space.







In the dining room, a square 8-person table allows for plenty of dinner parties with a view. Down-to-earth elements contrast with contemporary additions — like the floor lamps from Brokis — and the light and lifted pendant display has matching canopies to tie into the rest of the home's use of wood and structural elements.



Right next to the master bedroom, an office connects the main living area and the private wing. Its desk, which is set right in front of a window, allows the clients to take advantage of the stunning views.

The master bedroom features a beautiful indoor/outdoor approach — the epitome of Mediterranean living. Elegant furniture, like the sophisticated Minotti bed and sleek pendant lighting, respected the client's wishes but also fit beautifully within the room's architecture. The interior opens up to an outdoor terrace, which is outfitted with comfortable armchairs for the clients to enjoy the views over coffee in the morning.





To cap things off, the outdoor living area mimics the same comfort as the indoor living room. While allowing the clients to take in the ocean's beauty, the modern silhouettes echo the home's exterior architecture to create an elegant retreat to be enjoyed at all times.





All in all, the Canyamel project is signature Terraza Balear — elegant, sophisticated and nature-inspired — and the family will be able to bask in its authentic, harmoniously created ambiance for years to come.



PAOLA
LENTI



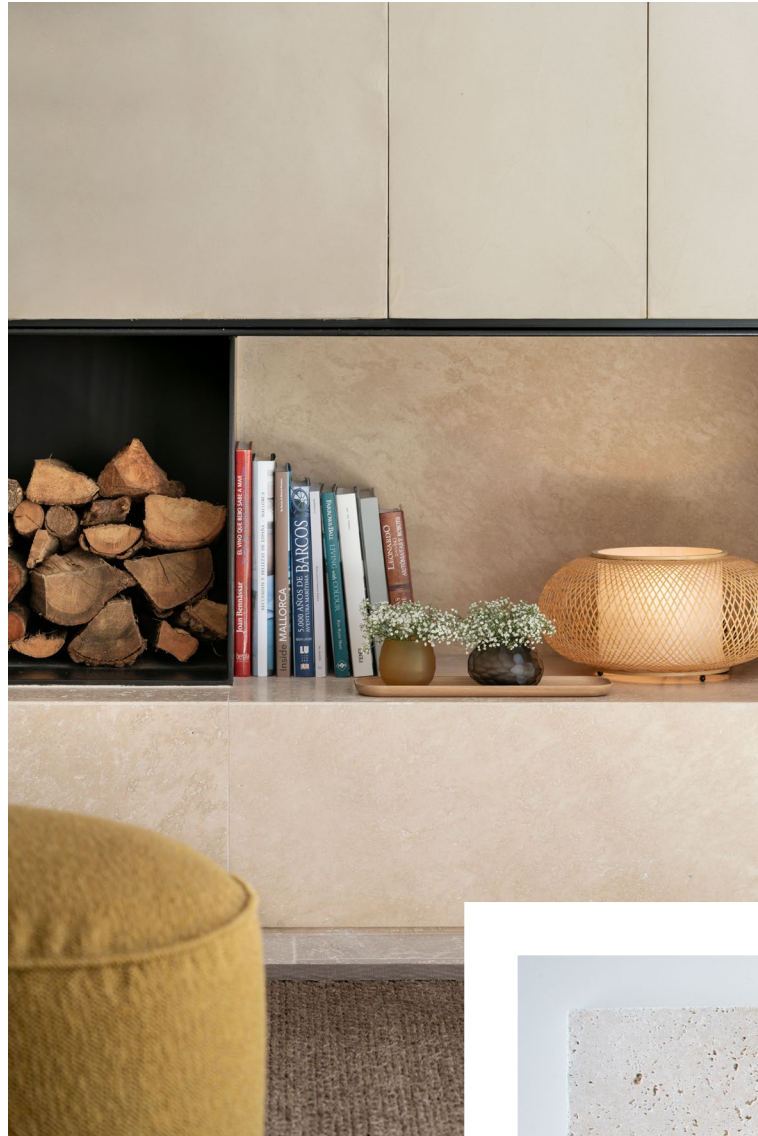
Santanyí



BY BRINGING THE OUTSIDE IN, WE CAPTURED THE PURITY OF THE ENVIRONMENT TO CREATE A ONE-OF-A-KIND RETREAT.

Santanyí, a small jewel in the southeast of Mallorca, is a charming town with quaint cobbled streets, fishing ports and some of the best beaches on the island with crystal clear waters. In partnership with Nacho Pons from 3DE3 Arquitectos and Mallorca Heritage, Terraza Balear directed the interior design, interior architecture and material choices of L'Imperial Santanyí to reflect this unique vibe.





The L'Imperial Santanyí project transmits the essence of the town itself using characteristic materials such as Santanyí stone, aged travertine, lime walls and aged oak wood. A complementary palette of neutrals with beautiful creams, sea blues and golden yellow bring sophistication and elegance to the design while making a strong statement.





The open-concept floor plan of this home allows for the client's family and friends to spend quality time together. In the kitchen, stunning floor-to-ceiling natural oak cabinets pair beautifully with the bright white island and accent cabinetry for a light and airy vibe. Mini glass pendant lights above the island tie in the seaside vibe, while a wine room right off the kitchen chicly stores all of the clients' best bottles of vino.





In the dining area, substantial wicker dome pendants are eye-catching but still visually light. Linen-upholstered chairs with sleek natural oak legs that tie in with the kitchen cabinets set the look off.

More linen covers the sectional in the living room area, where the same floor-to-ceiling cabinets continue from the kitchen. Decor accent colours of steel blue and golden yellow tie into the beautiful colours nature has provided outside.





In the master bedroom, a stunning travertine stone accent wall provides a beautiful backdrop for the minimalist furniture and dreamy, muted bedding. A spa-like master bath with a stunning built-in marble double sink allows for the ultimate in relaxation and restoration.





In the home's outdoor living area, no detail was left out, where the beautiful furnishings make the backyard feel just as comfortable as the home's interior. Similar wicker pendant lights adorn the outdoor dining area, and the lounge chairs provide a comfortable and chic place to sit by the vertical pool.

L'Imperial Santanyi was designed to please all of the senses, with very precise lighting for each space, textured materials with an insistence of the passage of time through them, sounds of fountains and streams in multiple corners and a garden with aromas of the Mediterranean. By bringing the outside in, we captured the purity of the environment and showcased it in our work.



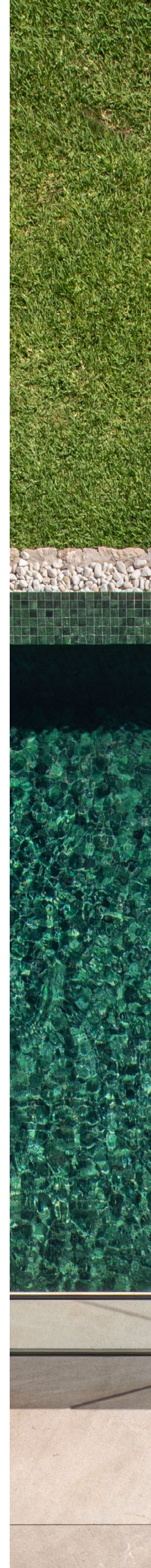


Poliform

M14

THE COSY FEELING CREATED IN THE M14 PROJECT IS ALL-ENCOMPASSING, PROVIDING ITS RESIDENTS WITH A COMFORTABLE YET ELEGANT HOME, A TERRAZA BALEAR SIGNATURE.

In the coastal area of Bendinat among luxury villas and apartments, our M14 project transformed a family vacation home into a cosy, Mediterranean-inspired retreat for our clients. We worked in collaboration with architect Osvaldo Luppi on this 450m² home, bringing to life the beautiful architecture and stunning views of the ocean with a rich combination of materials — including fabrics, leathers, marble and wood — in a soothing neutral color palette.







Starting in the living room, an elegant yet comfortable Flexform sectional and chairs provide plenty of seating options. Accents of slate blue in the pillows and glass decor connect to the sea views just out of the massive floor-to-ceiling window. Connected to the living room is an elevated reading corner, outfitted with a swivel armchair for maximum comfort and shelving to store the clients' favorite books and momentos. Light oak finishing on the walls provides a light, refined and bold look to this space.







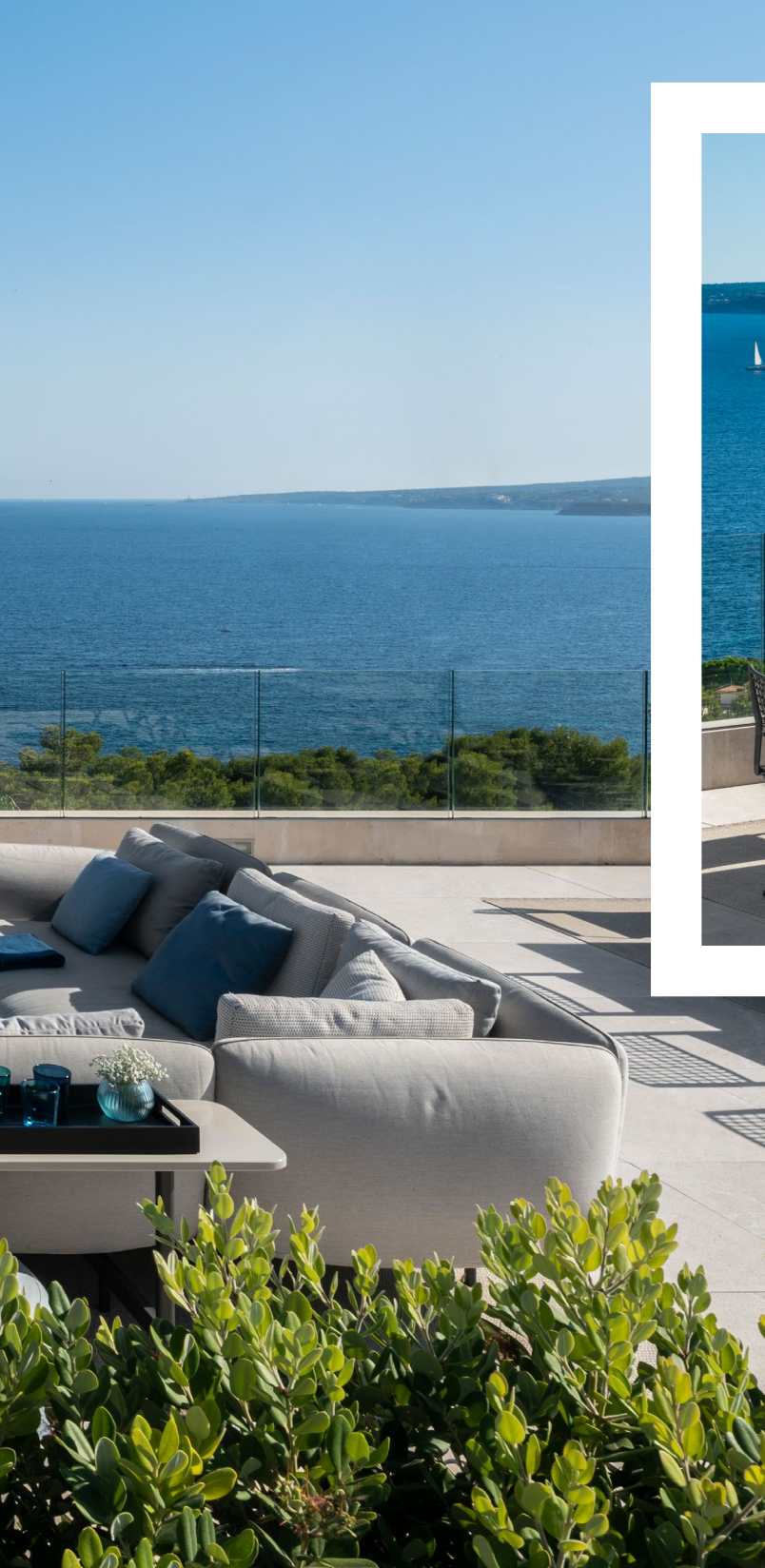
Proceeding into the dining room, a breathtaking pendant light display provides a dynamic and eye-catching detail above the table, which would fit 8 people comfortably. The table features the same oak wood as the walls throughout the common areas, tying the whole design together.





Beyond the common areas, the home also features four en-suite bedrooms, in which we again channeled our creativity with meticulous care for finishes, silhouettes and materials. Each bedroom has a luxury feel but is unpretentious in its appearance. Linen upholstery, simple and streamlined furniture pieces and complementary outdoor furniture on the attached balconies captures the harmony and purity of the environment.





Outside on the rooftop, we continued the contemporary sophistication that we're known for, taking complete advantage of the unobstructed views. A large dining table, huge sectional seating area from Tribù and a pool allows the clients to truly live their best lives up there, relaxing and spending time together. Every last detail — down to the blue-toned accents — was accounted for to ensure a seamless flow from interior to exterior furnishings.



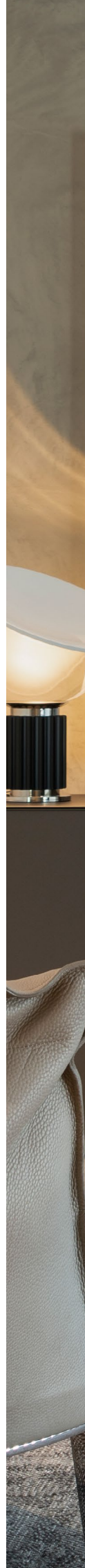
An aerial photograph of a swimming pool with blue mosaic tiles. A large, leafy tree is on the right side, casting a shadow over part of the pool. A concrete path runs along the top and right edges of the pool. A small white rectangular box with the text 'JAN KATH' is in the top right corner.

JAN
KATH

NF1

TERRAZA BALEAR'S QUEST TO CREATE MEDITERRANEAN-INSPIRED HOMES IS ONE THAT WE CONTINUE TO PERFECT, PROVIDING OUR CLIENTS WITH UNIQUE INTERIOR DESIGN THAT WORKS WITH THEIR LIFESTYLE.

Our latest project in Cala Llamp tasked our designers with transforming a 300 m2 holiday home – designed by SCT Estudio de Arquitectura – into a welcoming oasis for our clients to relax and recharge, all while immersed in the island's breathtaking beauty. Walking into the home's entrance, we created a small living space with a featured treatment wall to meet guests with a warm welcome. Right off the bat, the tone of the interior design is set – neutral tones, luxurious materials and an overall sense of elegance that only Terraza Balear can create. This cosy corner at the entrance is made complete with two enveloping armchairs from Poltrona Frau and a statement painting from Lidia Masllorens that grabs your attention right away.









In the living room, a generously sized sofa fits the whole family, providing maximum comfort, and the wooden coffee table connects with the beams from the staircase for a design throughline. Accents of deep blue and a healthy dose of greenery connect the space to the outdoor environment, while sleek yet organic decorative accessories tie the whole look together.



In the dining room, a table big enough for the whole family is surrounded by comfortable leather swivel chairs from B&B Italia. A stunning glass pendant light display in an array of rich neutrals adds just enough charm to the space while still looking totally refined, and the decor items again include tones that connect to the watery blues of the sea.





Further into the home, each of the bedrooms provide a serene and timeless escape for our clients filled with natural light and materials.

The master bedroom with en-suite bathroom looks out to the stunning views. Designed with soft, neutral finishes, the room's accent colours feature prominently in the bed linens and nature-inspired painting from Carolina Amigo.





Outside, furniture fills two separate seating areas and a dining area. Comfortable upholstered seating with clean lines and deep blue accents make the space feel connected to the home's interior making for a seamless way of living. A dark finish was chosen for the framing of the outdoor furniture to connect with the window frames and indoor dining area, too.

At Terraza Balear, we pour our hearts and souls into every project and each space is made with love – a feeling that's transmitted through our work. Our clients will enjoy making memories here for years to come.





FREIFRAU®

MANUFAKTUR



LEYASOL

designed by HOFFMANN KAHLEYSS DESIGN - Handmade in Germany by FREIFRAU MANUFAKTUR GmbH & Co. KG - www.freifrau.com



M16

DESIGNED TO TAKE FULLEST ADVANTAGE OF ITS STUNNING LOCATION, WITH AN ALMOST SEAMLESS FLOW OF INDOOR AND OUTDOOR LIVING, THIS STUNNING PROPERTY IS IN A LEAGUE OF ITS OWN.



The impressive 1260m² of living space located in Son Vida, is spread out over cleverly designed rooms boasting generous views of the surrounding hills, Palma town, the harbour and naturally, the Mediterranean Sea. It was designed by renowned Architect Osvaldo Luppi who made sure that natural light, views and nature play the lead in this impressive home. Terraza Balear was responsible for the interior furnishing and styling, and chose to use soft furnishings and understated tones to respect and honour the architecture.



Walking through, the spacious living room overlooks the generous terrace with its inviting outdoor pool. The entire facade can be opened up to allow outdoor and indoor to become one. The design is an understated palette of Terraza Balear signature tones, inspired by the Mediterranean sand, stone and wood found in the area.

Subtle and carefully curated use of colour provides the perfect base for the large Minotti sofa and accompanying set of Minotti club chairs and living room tables. Wood-clad pillars provide a striking focal point and separate the living room from the dining room. Here, a Poliform dining table joined by eight chairs of the same brand, provide the perfect space for engaging dinner parties.







The entrance is in the center of the house. Upon entering the home, an underwater glimpse of the outdoor pool immediately tells the story of luxury living and introduces natural light. A seating area with two elegant Minotti chairs and Tribù side table makes guests immediately feel welcome. The impressive Osvaldo Luppi designed staircase plays a fundamental role in the flow of home, connecting the various floors and spaces.





The master bedroom is a sanctuary of calm with a large Limited Edition rug functioning as a stage for the comfortable king-sized Minotti bed. Throw pillows in soft blues and greys add just enough colour to bring the room to life. Furthermore, they have a colour connection with the views outside. Also here, outdoor is welcomed in by sliding glass doors to open up a full wall. The view continues in the impressive master bathroom where they can be admired from the large tub and even the glass-paned walk-in shower.

In the spa area, an indoor pool and several inviting spots to sit or lie down and enjoy a good book, a cup of tea or just time admiring the gorgeous views are notable. Two oversized woven Paola Lenti chairs on the covered patio area give the space a luxurious vibe accompanied by an outdoor jacuzzi, further enhanced by the lounge chairs.







Outside, the living space continues with several terraces, each enclosed with glass banisters to ensure unobstructed views. To match the sea below, accents in a variety of blues were introduced here. A large woven Paola Lenti ottoman in a striking teal sits between the same Paola Lenti chairs as in the spa area. On the main terrace, a large dining table with matching chairs, also by B&B Italia, make the terrace the perfect setting for al fresco dining or sunny breakfasts.



BC 07 Basket table by Janua – Fascinatingly light, perfectly formed

BC 07 Basket – Table top in white smoked oak raw effect and brushed, table frame steel RAL 9005 deep black powder finish with struts in anodised aluminium EV6 black



Chairs by Freifrau

Designer duo Birgit Hoffmann and Christoph Kahleyss shaped the leg supports to compliment the elegant and unique form of the table. The table's shape was inspired by the ships in the port of Hamburg. The entire concept relies on smooth edges and rounded corners. Though the BC 07 Basket table design is light, its character carries serious weight.

More information at janua-moebel.com

JANUA®
LUST AUF MÖBEL MIT CHARAKTER



SV

NEUTRAL TONES AND ITALIAN ELEGANCE
DESIGN THE PERFECT SPACE TO CREATE NEW
MEDITERRANEAN MEMORIES.

This three-story property offers the best views of Palma de Mallorca. Because of its privileged orientation, these can be enjoyed from several sun-soaked terraces and bright living spaces, offering Mediterranean living.

The home is located in the affluent Son Vida neighbourhood and designed to benefit from the gorgeous views of the bay of Palma and the green mountains. Each floor and each room has large windows allowing the striking scenery and light to pour in, blending with the elegant living spaces inside.







The comfortable and spacious living room is separated from the dining room by a freestanding fireplace, open to both rooms. A carefully curated mix of furniture in soft tones gives the rooms a sophisticated flair. The large B&B Italia sectional sofa with two matching coffee tables in the lounge area provide just the right amount of cosiness for relaxing moments with family.

Subtle use of accent colours in blue and green mimic the hues found in the views outside, visible through the floor-to-ceiling glass window. In front of it, an elegant set of Flexform chaises, paired with a Poltrona Frau accent table, make this the perfect spot to take in the views. In the dining room, a generous B&B Italia dining table is accompanied by Vitra chairs. They sit on a large Limited Edition rug, adding to the harmonious mix of wood, lacquer, leather and soft furnishings.





The master bedroom is located on the top floor. With 62 m², it's more than large enough to double as a quiet retreat from the family rooms below. A Piet Boon chaise is placed facing the window to take in the scenery at its maximum. Again, the views are the main draw here, with wall-to-wall sliding doors opening up to another full terrace with an inviting set of DEDON chairs. The master bathroom with double vanity and a freestanding tub is furnished with Agape shelves and decorative accessories in natural tones, further connecting indoor and outdoor. On the same floor, two double bedrooms, each with their own en-suite bathroom, complete the sleeping area.

Outside, on the vast terrace, the marvelous views are to be admired even more from a variety of seating options. A full-sized B&B Italia dining set with rope woven chairs offer plenty of room for dining under the sun or the stars.

It also offers a more shaded retreat on hot days with a large covered porch of 43m². It opens up to the largest of outdoor spaces with an amazing pool. The terrace along it is furnished with comfortable lounge furniture to allow for perfect poolside days. Two fun Paola Lenti bean bag-inspired chaises in aqua green match perfectly with the inviting pool's colour. Further along, a Tribù sectional lounge sofa dotted with throw pillows in a variety of colours offers even more space to create new Mediterranean memories.





BROKIS
CONTEMPORARY
VISIONS OF LIGHT

BONBORI
design: Fumie Shibata
photo: Jan Voharcik
location: Resort Svata Katerina
www.brokis.cz



Seahouse



CAPTURING THE PURITY OF THE ENVIRONMENT, AND
DESIGNED TO ENHANCE IT'S OWNERS' ENJOYMENT
OF THE MEDITERRANEAN LIFESTYLE.

Seahouse is a true tour de force of contemporary design – creating a serene environment, superbly attuned to its stunning natural setting. Our interior design team worked hand-in-hand with the architect Achim Marwitz to connect all spaces from interior architecture to lighting and even the smallest decorative detail.





At the entrance of the house, the architecture defines an imposing height as the main protagonist to the space. The light oak wood on the ceiling provides a warm hug to space, whose center is dominated by a couple of Lawrence Clan poufs by Minotti. The majestic entrance hall of Seahouse sets the tone for the splendid interiors that are yet to discover.





In the living space, the Alexander Seating System by Rodolfo Dordoni faces the Jensen armchair and the Ring coffee table, all by Minotti. Its elegant light fabric contrasts with the touches of petrol and turquoise that can be found on the decorative cushions.





The nearby dining area elegantly displays several Fil Noir chairs designed by Christophe Delcourt for Minotti, surrounding a wooden dining table in the name of pure refinement. Both spaces are designed to be in harmonic dialogue with the outdoor through large floor-to-ceiling windows, highlighting the importance of merging the interiors with the exteriors.





On the upper floor, the night area offers an atmosphere of calm and relaxation accompanied by breathtaking views over the sea while reflecting the same warm elegance that distinguishes the entire residence. In the master bedroom is the Curtis bed by Rodolfo Dordoni with its peculiarly patterned headboard, accompanied by other Minotti pieces.

The bathroom once again takes advantage of the stunning views, providing a spa-like feel for its residents. You can tell that the pure, clean feeling the space conveys — complete with a large soaking tub, dual vanity and sleek marble countertops — is of the utmost quality.





Neutral tones and smooth fabrics combined with brushstrokes of petrol and turquoise, which can also be found inside, are merging together indoor and outdoor spaces. An island of comfort is created by the Quadrado Modular System by Marcio Kogan for Minotti outdoor collection.







DEDON

TOUR DU MONDE



DEDON COLLECTION SEALINE
Design by Jean-Marie Massaud

www.dedon.de



CEO

Mariana Muñoz

COO

Juan Carlos Limiñana

PERSONAL ASSISTANT

Emilia Turco

INTERIOR DESIGN

Elena Giménez
Indiana Dormer
Franziska Heck
Irene Bericua
Aina Ripoll
Carolina Suñer
Isabella Fancello
Flor del Valle
Tizia Maria Jatzke
Simone Florian
Thays Runge
Seokjae Hong
Laura Pou
Laia Nicolau
Susanne Espinagosa

INTERIOR ARCHITECTURE

Carmen Pujol
Rosa Gost
Marina Schall
Rocío Ramírez
Gabriela Alemany
Antonia Zoë Strunk

ART & STYLING

Miguel Oliver
Tamara Nielsen

SHOWROOM

Raquel Torres

MARKETING

Soraya Ruiz
Juan Albis

ADMINISTRATION

Begoña Suárez
Ana Andrés
Mónica Osorno
Claudia Morffi
Verónica de los Reyes
Aneta Talarczyk
Mikel Dierssen

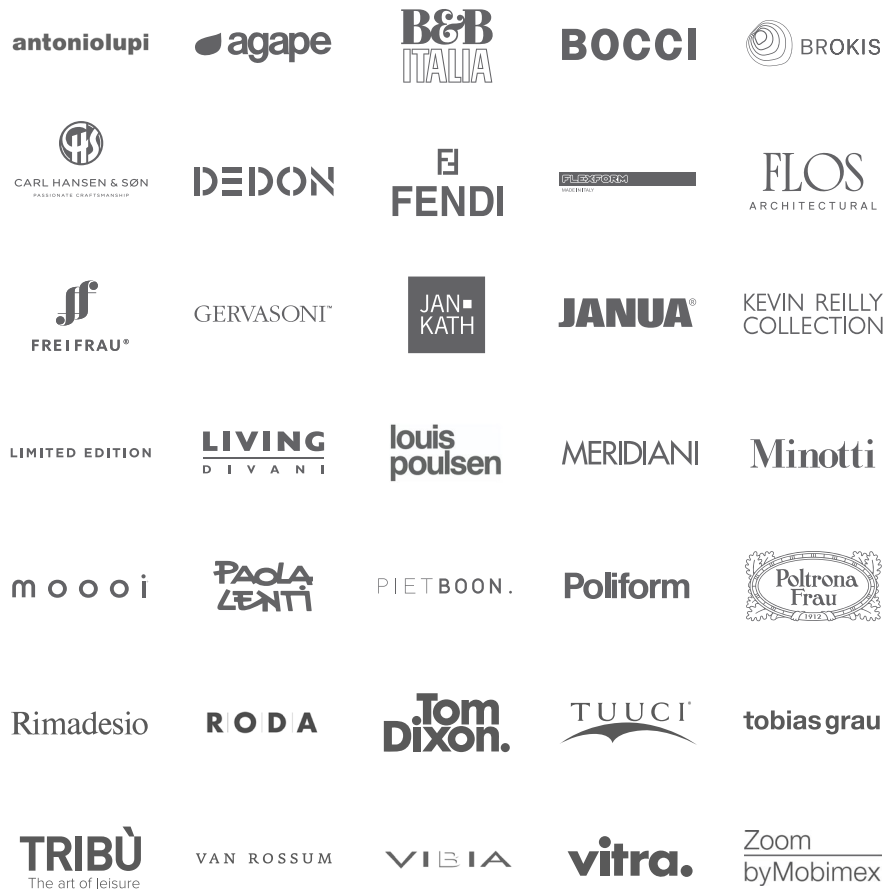
LOGISTICS

Alex Gottardi
Martín Carinelli
Libardo Ortiz
Lorenzo Martín
Felipe López
Nikolay Yankow
Pedro Tomás
Patrick Harig



The team

Our brands



BE INSPIRED



interior design projects

terrazabalea.com | (+34) 971 698 258

ISLAS BALEARES, 18, 07180 SANTA PONSÀ

MALLORCA, SPAIN



DANIELS SEATING SYSTEM | CHRISTOPHE DELCOURT DESIGN
LAWSON ARMCHAIRS | RODOLFO DORDONI DESIGN

WWW.MINOTTI.COM

Minotti